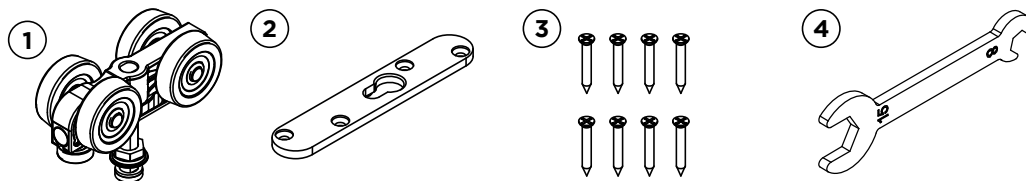
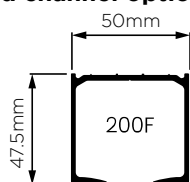


Pack contents

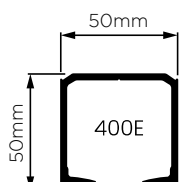
1. 2 x Hanger and bolt
2. 2 x Mounting brackets
3. 8 x Fixing screws
4. 1 x Spanner



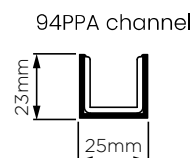
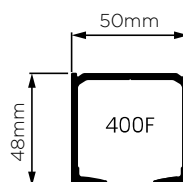
Track and channel options



200F for 200kg systems

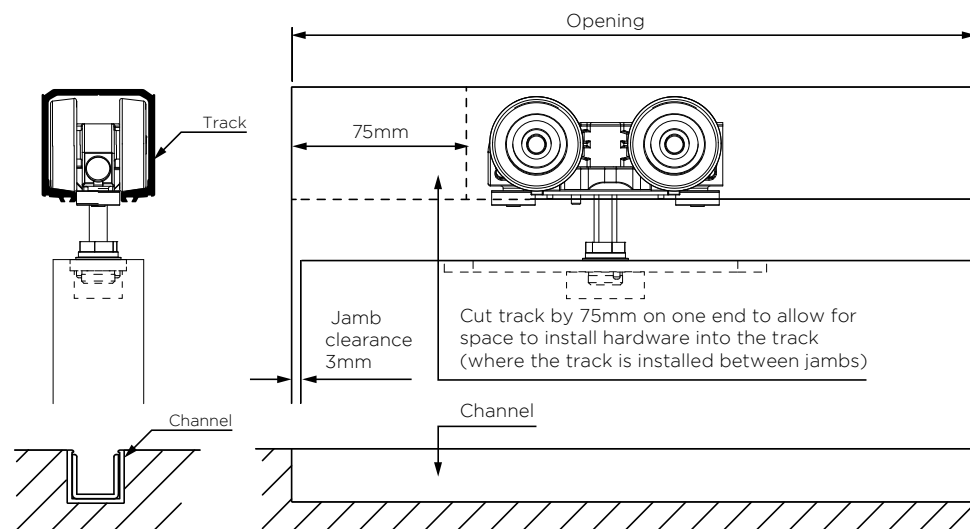


400E and 400F for 400kg systems

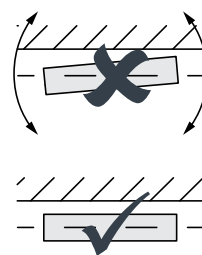


1. Track and channel installation

Fix track with screws starting with 35mm from each end and then at 400mm intervals



Ensure track is installed parallel to the wall

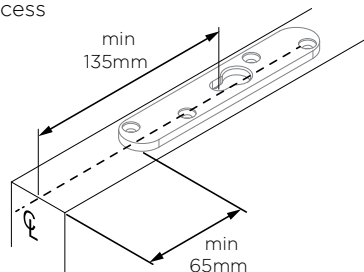


Once track and channel are installed, ensure that all dust, swarf or contamination is removed from the inside of the track before fitting any hardware.

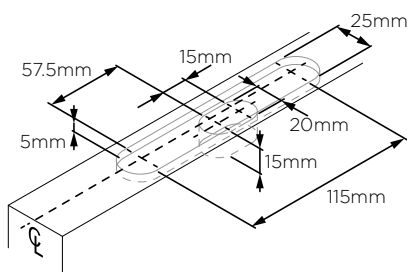
If installing 94PPA, cut length to opening, countersink and fix screws 35mm from each end then fix at 400mm intervals. Install 94P polypropylene infill last.

2. Panel preparation

2.1 Use the bracket as a template to mark the position for the panel recess

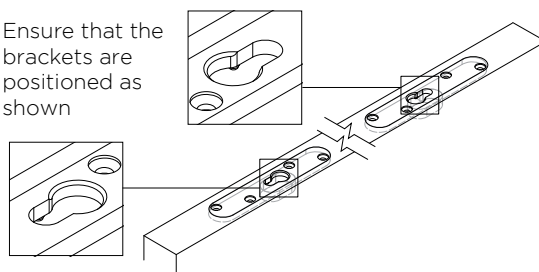


2.2 Route the recess for the bracket. Mirror the recess on the other side of the panel

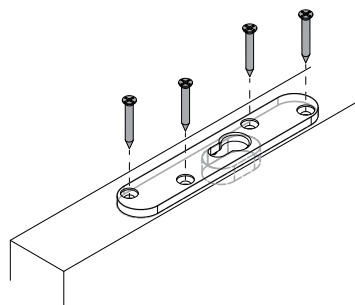


2.3 Place the brackets in the routed recess.

Ensure that the brackets are positioned as shown



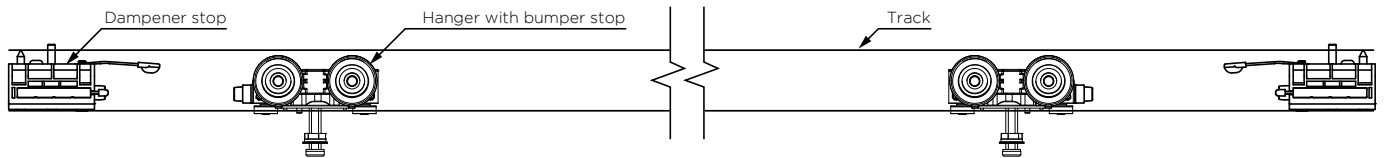
2.4 Fix bracket with fixing screws provided



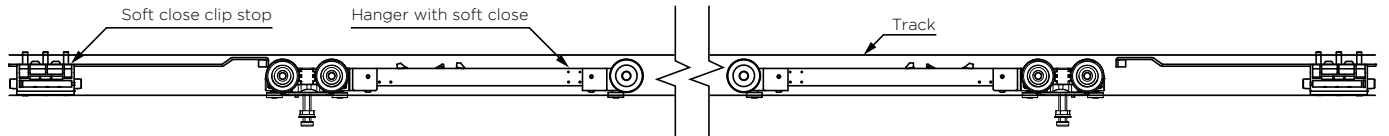
3. Hardware installation

Insert hardware into the track following the appropriate instructions to install soft close/s or dampener stop/s as required

Side elevation shown with dampener stops used on both ends

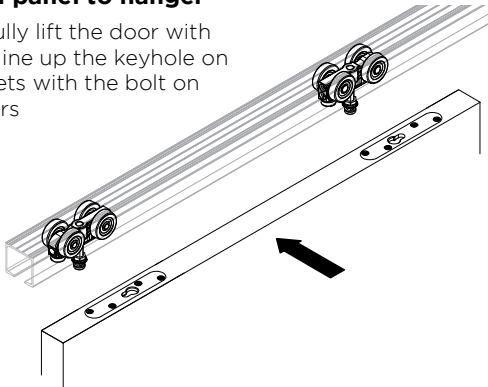


Side elevation shown with soft closers used on both ends

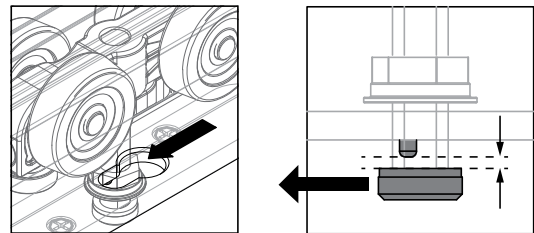


4. Attach panel to hanger

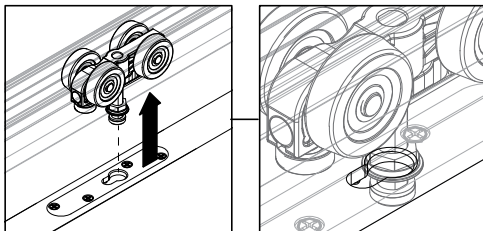
4.1 Carefully lift the door with brackets, line up the keyhole on the brackets with the bolt on the hangers



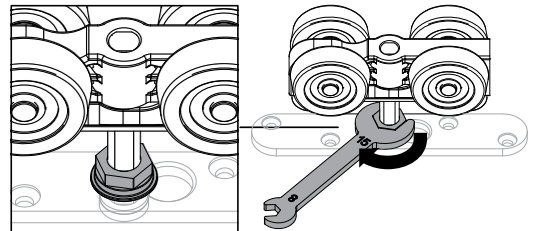
4.3 Slide the bolt on hanger to the small opening of keyhole and ensure the bolt head should pass over the boss on bracket



4.2 Locate the hanger bolt into the bracket keyhole and insert the bolt head into the larger opening of key hole



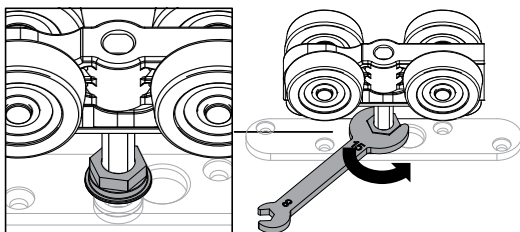
4.4 Tighten the nut to secure the hanger



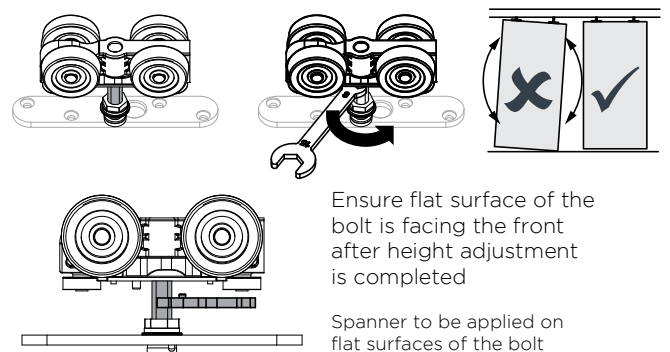
5. Height adjustment

Hanger height is pre-adjusted, follow steps for height adjustment if necessary.

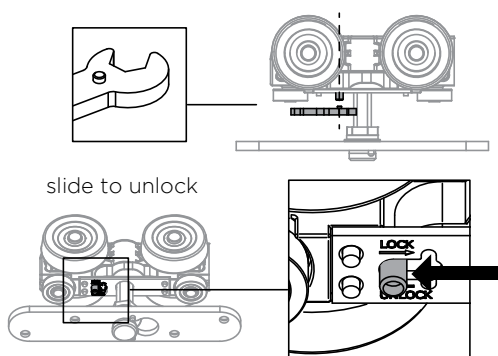
5.1 Loosen up the nut on the bracket.



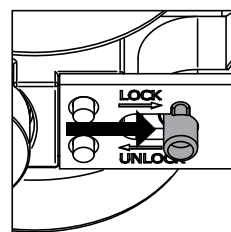
5.3 Adjust the height by using the 8mm opening on the spanner to rotate the bolt. Anti-clockwise to raise and clockwise to lower the panel



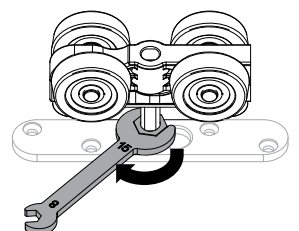
5.2 Unlock the bolt by moving the switch to the unlocking position. Line up peg on the spanner to the locking button and press.



5.4 Lock the bolt by moving the switch to the locking position

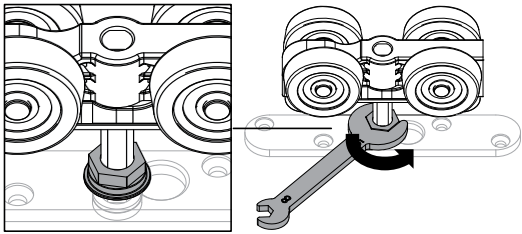


5.5 Tighten the nut to secure the hanger

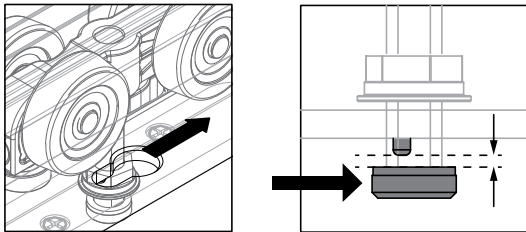


6. Release the panel

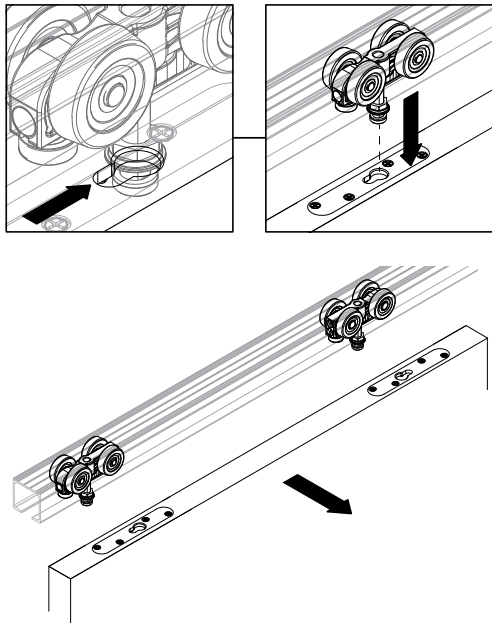
6.1 Release the locking nut at least 4mm by rotating anti clockwise



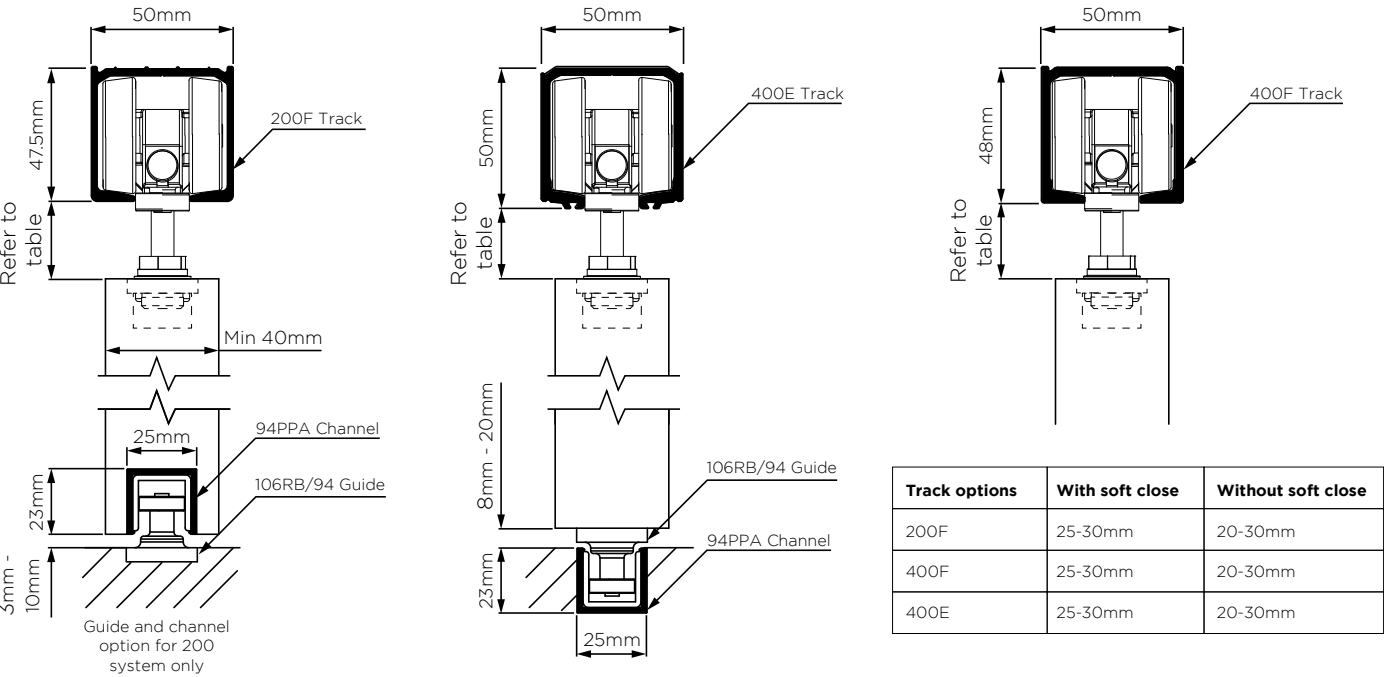
6.2 Slide the bolt on hanger to the large opening of keyhole and ensure the bolt head should pass over the boss on bracket



6.3 Remove the panel



7. System overview



Care and maintenance

General

Inspect all fixing bolts for tightness every six months, including those securing brackets. Tighten if necessary. Routinely check for wear and if excessively worn, the part should be replaced.

To help prevent surface corrosion, wash regularly with soap or mild detergent and warm water followed by rinsing with clean cold water and dry.

Track

Keep track free from obstruction and excessive dirt or water. Visible surfaces should be cleaned using a damp cloth and mild detergent, then wiped dry.

Hangers

All hangers are fitted with lubricated ball-bearings, requiring no greasing. If doors 'settle' and door clearance is reduced causing friction, raise the door by the hanger adjustment nuts. Wash as per the above recommendation and apply a light application of corrosion preventative to all surfaces, using a dry cloth to remove excess.

Guides

Guide roller and guide channel must be kept clear and free of obstructions. Wash as per the above recommendation and apply a light application of corrosion preventative to all surfaces, using a dry cloth to remove excess.



Brio Australia
1800 098 094
info.au@allegion.com
www.brio.com.au

Brio NZ
+64 9 829 0550
nzinfo@allegion.com
www.brionz.com